

## MP-122000-GT

### Features:



- >> Telecommunications
- >> Solar system
- >> Wind power system
- >> Engine starting
- >> Wheelchair
- >> Floor cleaning machines
- >> Golf trolley
- >> Boats

## Technical Specifications

Model	MP-122000-GT	
Nominal Voltage	12V	
Nominal Capacity(10HR)	200AH	
Dimension	Length	522 ± 3mm (20.55 inches)
	Width	240 ± 2mm (9.45 inches)
	Container Height	218 ± 2mm (8.58 inches)
	Total Height (with Terminal)	244 ± 2mm (8.81 inches)
Approx. Weight	Approx 55.5Kg (122.5 lbs)	
Terminal	T11	
Container Material	ABS	
Rated Capacity	209.1 AH/10.4A	(20hr ,1.80V/cell,25°C/77°F)
	200.0 AH/20.0A	(10hr,1.80V/cell,25°C/77°F)
	173.0 A H/34.6A	(5hr,1.75V/cell,25°C/77°F)
	157.2 AH/52.4A	(3hr,1.75V/cell,25°C/77°F)
	122.8 AH/122.8A	(1hr,1.60V/cell,25°C/77°F)
Max. Discharge Current	1800A (5s)	
Internal Resistance	Approx 3.4 mΩ	
Operating Temp. Range	Discharge: -30~ 50°C (5 122°F) Charge: 0 ~ 40°C (32 ~ 104°F) Storage: -30~ 40°C (5 104°F)	
Nominal Operating Temp. Range	25 ± 3°C (77± 5°F)	
Cycle Use	Initial Charging Current less than 60 A. Voltage 14.4V~14.9V at 25°C (77°F) Temp. Coefficient -30mV/°C	
Standby Use	No limit on Initial Charging Current Voltage 13.5V~13.8V at 25°C (77°F) Temp. Coefficient -20mV/°C	
Capacity affected by Temperature	40°C (104 °F)	103%
	25°C (77 °F)	100%
	0°C (32 °F)	86%
Self-Discharge	MEDAL POWER GEL series batteries may be stored for up to 9months at 25°C (77°F) and battery should be recharge before use. For higher temperatures the time interval will be shorter	

LEAVE POWER FOR MEDAL POWER

LEAVE POWER FOR MEDAL POWER

Constant Current Discharge (Amperes) at 25°C (77°F)

F.V/Time	20min	30min	45min	1h	2h	3h	4h	5h	6h	7h	8h	9h	10h	20h
1.85V/cell	169.2	132.8	101.3	84.8	53.8	41.0	34.0	29.3	25.3	22.4	20.2	18.5	17.5	9.60
1.80V/cell	193.8	148.4	111.7	93.6	58.2	43.9	36.0	30.8	26.6	23.5	21.2	19.4	18.2	10.0
1.75V/cell	217.8	163.2	120.8	100.2	61.7	46.4	37.7	32.0	27.5	24.3	21.9	20.0	18.6	10.2
1.70V/cell	234.6	174.8	128.3	106.0	65.4	48.3	39.0	33.0	28.5	25.1	22.5	20.5	19.0	10.3
1.67V/cell	244.2	181.6	132.8	110.0	67.1	49.9	39.9	33.7	28.9	25.5	22.9	20.8	19.3	10.4
1.60V/cell	264.6	194.4	142.7	116.8	69.8	51.9	41.4	34.7	29.6	26.0	23.3	21.2	19.6	10.6

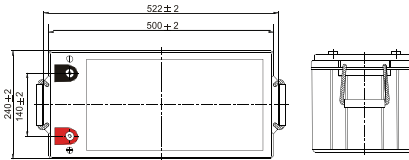
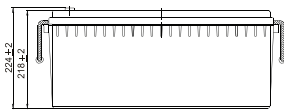
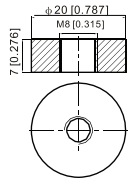
Constant Power Discharge (Watts) at 25°C (77°F)

F.V/Time	20min	30min	45min	1h	2h	3h	4h	5h	6h	7h	8h	9h	10h	20h
1.85V/cell	323.8	255.9	196.5	165.1	105.1	80.3	66.8	57.9	50.1	44.5	40.2	36.8	34.8	19.2
1.80V/cell	366.1	283.3	215.1	181.3	113.3	85.8	70.5	60.6	52.4	46.4	42.0	38.6	36.3	19.9
1.75V/cell	406.9	308.7	230.8	193.1	119.6	90.4	73.6	62.7	54.1	47.9	43.3	39.7	37.0	20.3
1.70V/cell	433.5	327.8	243.3	203.1	126.2	93.9	75.9	64.5	55.9	49.4	44.5	40.7	37.8	20.5
1.67V/cell	446.2	337.0	250.2	209.6	128.8	96.4	77.5	65.7	56.7	50.0	45.1	41.1	38.2	20.7
1.60V/cell	478.1	357.3	266.8	221.3	133.4	99.8	80.2	67.5	57.8	51.0	45.8	42.0	38.9	21.0

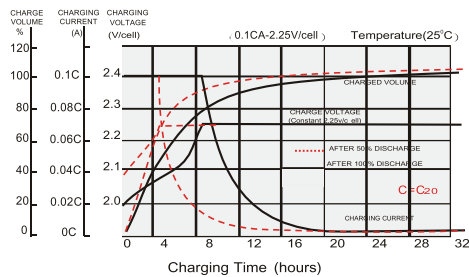
Dimensions

T11 Terminal

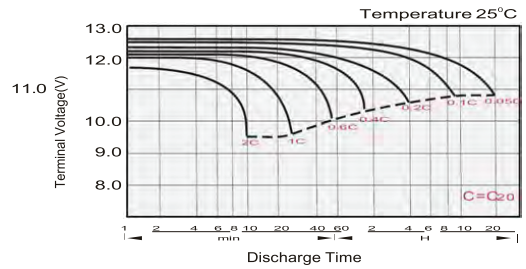
Unit: mm [inches]



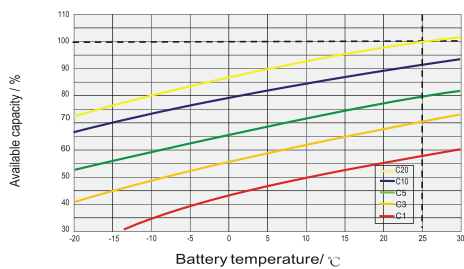
Float Charging Characteristics



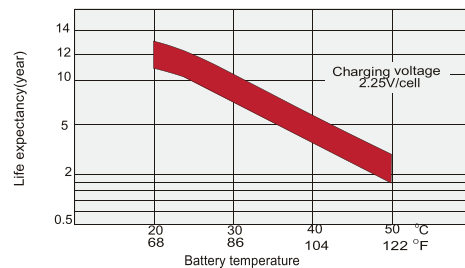
Discharge Characteristics



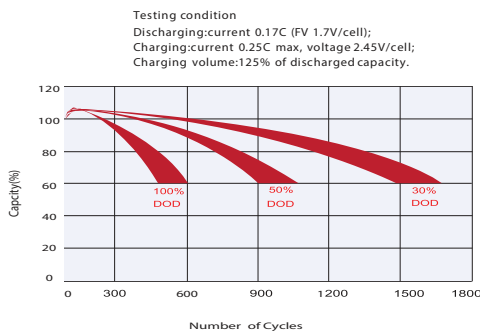
Temperature Effects in Relation to Battery Capacity



Effect of Temperature on Long Term Float Life



Cycle Life in Relation to Depth of Discharge



General Relation of Capacity VS. Storage Time

