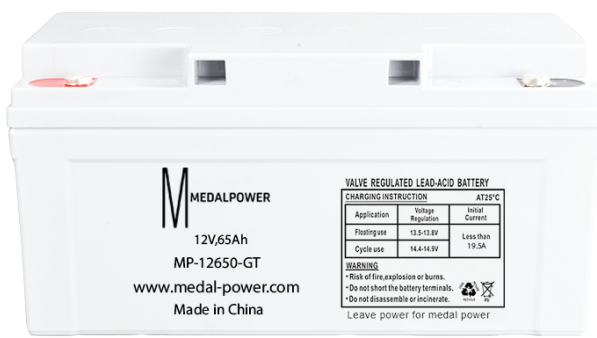


MP-12650-GT

Features:



- >> Electric tools
- >> Vehicle in place of walking
- >> Lawn mowers
- >> Golf trolleys and golf cart
- >> Portable apparatus, lights and instruments;
- >> Electric toys
- >> Illumination light
- >> Fire alarms
- >> Portable power
- >> Wheelchairs
- >> Medical equipments.

Technical Specifications

| Model | MP-12650-GT | |
|----------------------------------|---|------------------------------|
| Nominal Voltage | 12V | |
| Nominal Capacity(10HR) | 65AH | |
| Dimension | Length | 348 ±3mm (13.70 inches) |
| | Width | 167 ± 2mm (6.57 inches) |
| | Container Height | 178 ± 2mm (7.01 inches) |
| | Total Height (with Terminal) | 178 ± 2mm (7.01 inches) |
| Approx. Weight | Approx 19.05 Kg (42.1lbs) | |
| Terminal | T6 / T10 | |
| Container Material | ABS | |
| Rated Capacity | 67.9 AH/3.39A | (20hr ,1.80V/cell,25°C/77°F) |
| | 65.0 AH/6.50A | (10hr,1.80V/cell,25°C/77°F) |
| | 56.2 AH/11.2A | (5hr,1.75V/cell,25°C/77°F) |
| | 51.0 AH/17.0A | (3hr,1.75V/cell,25°C/77°F) |
| | 39.9 AH/39.9A | (1hr,1.60V/cell,25°C/77°F) |
| Max. Discharge Current | 780A (5s) | |
| Internal Resistance | Approx 7.4 mΩ | |
| Operating Temp. Range | Discharge: -15 ~50°C (5 ~122°F) Charge: 0 ~ 40°C (32 ~ 104°F) Storage: -15 ~40°C (5 ~104°F) | |
| Nominal Operating Temp. Range | 25 ± 3°C (77± 5°F) | |
| Cycle Use | Initial Charging Current less than 19.5 A Voltage 14.4V~14.9V at 25°C (77°F) Temp. Coefficient -30mV/°C | |
| Standby Use | No limit on Initial Charging Current Voltage 13.5V~13.8V at 25°C (77°F) Temp. Coefficient -20mV/°C | |
| Capacity affected by Temperature | 40°C (104 °F) | 103% |
| | 25°C (77 °F) | 100% |
| | 0°C (32 °F) | 86% |
| Self-Discharge | MEDAL POWER DC series batteries may be stored for up to 6 months at 25°C (77°F) and battery should be recharge before use. For higher temperatures the time interval will be shorter. | |

LEAVE POWER FOR MEDAL POWER

LEAVE POWER FOR MEDAL POWER

Constant Current Discharge (Amperes) at 25°C (77°F)

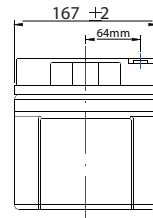
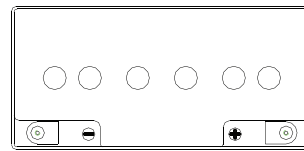
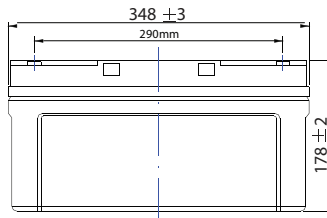
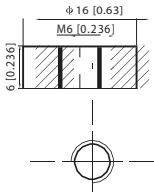
| F.V/Time | 5min | 10min | 15min | 30min | 45min | 1h | 2h | 3h | 5h | 8h | 10h | 20h |
|----------|-------|-------|-------|-------|-------|------|------|------|------|-----|-----|------|
| 1.80V | 151.2 | 96.4 | 81.9 | 52.3 | 38.4 | 35.3 | 22.4 | 15.8 | 10.7 | 7.1 | 6.3 | 3.50 |
| 1.75V | 157.2 | 100.2 | 85.2 | 54.4 | 40.0 | 36.7 | 23.3 | 16.4 | 11.1 | 7.3 | 6.6 | 3.64 |
| 1.70V | 160.3 | 102.2 | 86.8 | 55.4 | 40.7 | 37.4 | 23.8 | 16.7 | 11.4 | 7.5 | 6.7 | 3.71 |
| 1.65V | 163.3 | 104.1 | 88.5 | 56.5 | 41.5 | 38.1 | 24.2 | 17.0 | 11.6 | 7.6 | 6.8 | 3.78 |
| 1.60V | 166.3 | 106.0 | 90.1 | 57.5 | 42.3 | 38.8 | 24.7 | 17.3 | 11.8 | 7.8 | 6.9 | 3.85 |

Constant Power Discharge (Watts) at 25°C (77°F)

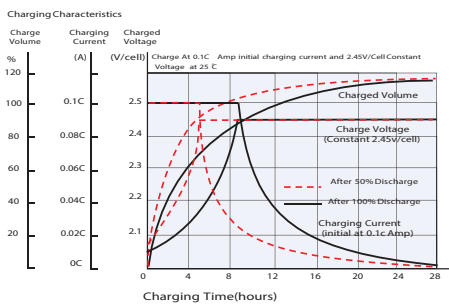
| F.V/Time | 5min | 10min | 15min | 30min | 45min | 1h | 2h | 3h | 5h | 8h | 10h | 20h |
|----------|-------|-------|-------|-------|-------|------|------|------|------|------|------|-----|
| 1.80V | 291.1 | 185.6 | 157.7 | 100.7 | 74.0 | 67.9 | 43.2 | 30.3 | 20.6 | 13.6 | 12.1 | 6.7 |
| 1.75V | 302.7 | 193.0 | 164.0 | 104.7 | 76.9 | 70.6 | 44.9 | 31.5 | 21.4 | 14.1 | 12.6 | 7.0 |
| 1.70V | 308.5 | 196.7 | 167.1 | 106.7 | 78.4 | 72.0 | 45.8 | 32.1 | 21.9 | 14.4 | 12.9 | 7.1 |
| 1.65V | 314.3 | 200.4 | 170.3 | 108.7 | 79.9 | 73.3 | 46.6 | 32.7 | 22.3 | 14.7 | 13.1 | 7.3 |
| 1.60V | 320.2 | 204.1 | 173.4 | 110.7 | 81.4 | 74.7 | 47.5 | 33.4 | 22.7 | 14.9 | 13.3 | 7.4 |

Dimensions

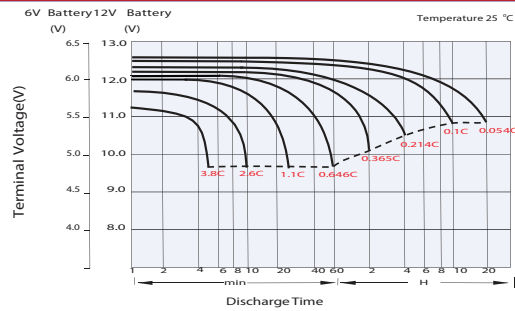
T6 Terminal
Unit: mm [inches]



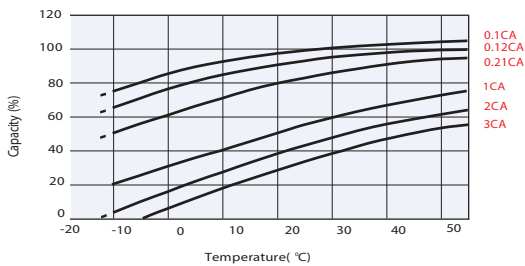
Charging Characteristics (cycle use)



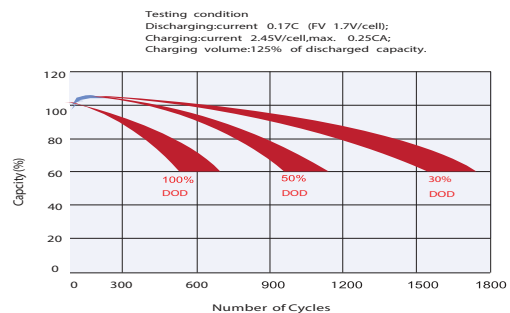
Discharge Characteristics



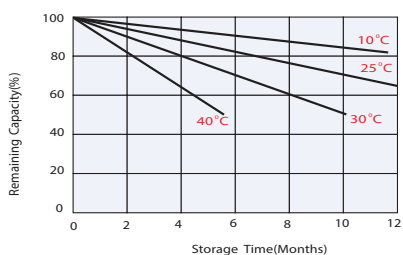
Temperature Effects in Relation to Battery Capacity



Cycle Life in Relation to Depth of Discharge



Self Discharge Characteristics



No supplementary charge required
(Carry out supplementary charge before use if 100% capacity is required.)

Supplementary charge required before use. Optional charging way as below:
1. Charged for above 3 days at limited current 0.25CA and constant voltage 2.25V/cell.
2. Charged for above 20 hours at limited current 0.25CA and constant voltage 2.45V/cell.
3. Charged for 8-10 hours at limited current 0.05CA.

Supplementary charge may often fail to recover the capacity.
The battery should never be left standing till this is reached.